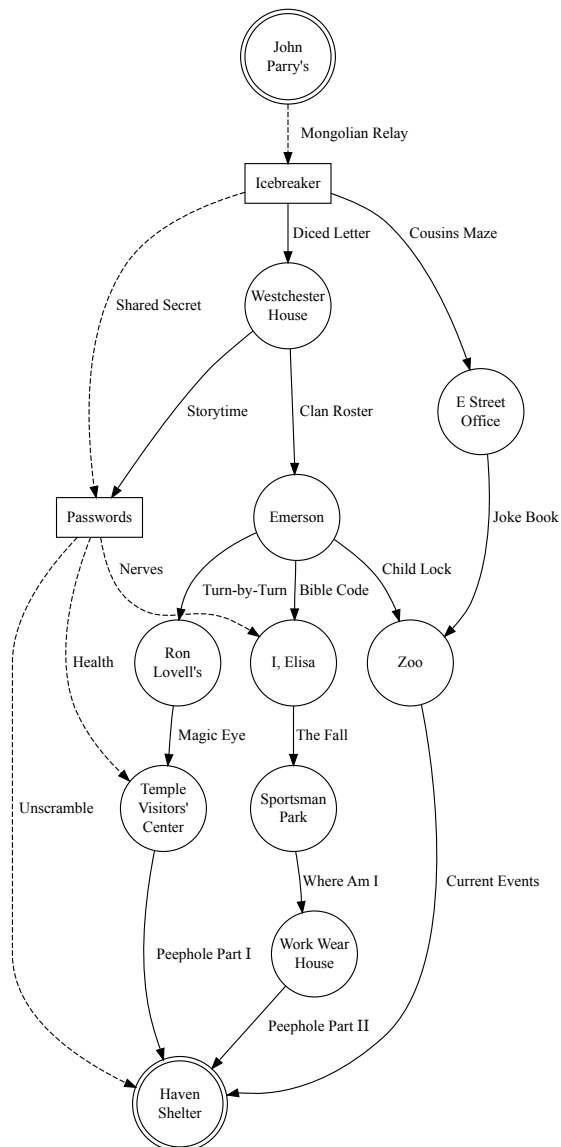




# Parry Family Puzzle Hunt

## Solutions

The puzzle hunt consisted of 11 locations (shown as circles below) and 14 puzzles (shown as solid arrows below).





## Parry Family Puzzle Hunt



### Temple Visitors' Center

The team must arrive at the temple visitors' center and find Sister Hillman. She will tell them:

*You must answer this riddle with a password. If you obey the Word of Wisdom, what does God promise for your navel?*

The team must answer with the word “health.” Then they can take the box with their team mascot on it.



## Parry Family Puzzle Hunt



### I, Elisa

When the team contacts Elisa, she will tell them:

*You must answer this riddle with a password. After the first members of the human family became mortal, they learned about pleasure and pain through 45 miles of what?*

The team must answer with the word “nerves.” Then Elisa will give them the clue, “The Fall.” The clue is available online at <http://elisa.parry.org/fall>.



### Storytime

Each team received a different list of secret words.

- Dasher (expecting a story about the cabin): blessing, bones, compassion, covenant, discipline, divinity, effort, faith, forgiveness, growth, health, heart, heaven, honesty, keys, kindness, labor, lesson, love, nerves, nourishment, refuge, responsibility, sabbath, safety, sharing, society, soul, sympathize, youth
- Dancer (expecting a story about sports): body, bond, covenant, divinity, endure, entreat, forgiveness, fortitude, growth, guidance, health, home, justice, life, light, loyalty, nerves, obedience, peace, plan, ponder, praise, protection, recovery, recreation, refuge, security, soul, spirit, sympathize
- Prancer (expecting a story about boating): charity, church, discipline, endure, entreat, example, family, growth, health, journal, keys, leadership, loyalty, marriage, mercy, nerves, parents, ponder, preparation, recreation, respect, reverence, sabbath, safety, sharing, society, spirit, support, temple, worthiness
- Vixen (expecting a story about the holidays): commandment, divinity, example, family, fortitude, happiness, health, heart, heaven, honesty, joy, life, love, mercy, nerves, ordinance, parents, plan, ponder, promise, protection, recovery, repentance, responsibility, safety, seal, teaching, virtue, worthiness, wrest
- Comet (expecting a story about their mom): blessing, bond, born, commandment, compassion, covenant, discipline, dwell, example, faith, friendship, health, intelligence, journal, joy, justice, love, loyalty, mind, nerves, obedience, recovery, respect, seal, security, strength, support, temple, virtue, youth
- Cupid (expecting a story about Jack and Lois's house): body, bones, born, challenge, church, delivered, endure, faith, friendship, guidance, happiness, health, keys, labor, learning, life, light, marriage, nerves, nourishment, preparation, repentance, respect, responsibility, security, strength, sympathize, virtue, worthiness, wrest
- Donner (expecting a story about an injury): charity, compassion, delivered, effort, fortitude, guidance, health, home, honesty, honor, intelligence, joy, justice, kindness, learning, mind, nerves, nourishment, parents, peace, preparation, promise, refuge, repentance, reverence, sharing, spirit, strength, support, teaching



## Parry Family Puzzle Hunt

---

- Blitzen (expecting a story about Lagoon): blessing, body, challenge, church, delivered, dwell, family, forgiveness, friendship, health, heaven, home, honor, intelligence, kindness, labor, leadership, lesson, nerves, obedience, ordinance, praise, protection, recreation, reverence, sabbath, seal, teaching, temple, wrest
- Rudolph (expecting a story about school): bond, bones, born, challenge, charity, commandment, dwell, effort, entreat, happiness, health, heart, honor, journal, leadership, learning, lesson, light, marriage, mercy, mind, nerves, ordinance, peace, plan, praise, promise, society, soul, youth

Each list contains the two actual passwords, and also 28 other words that are red herrings. The red herring words are arranged so that each one appears on exactly three different lists. If any three teams get together and compare lists, they will always find one red herring in common. They will have to cooperate with a fourth team to be able to narrow down the list to the actual passwords. After cooperating with a fourth team, they will always be done. Since each red herring only appears on three lists, there are no red herrings that would be on all four teams' lists.

That means that every team will reach a solution after talking with three other teams—no sooner and no later—no matter which three teams they choose.

- Each team starts with 30 words.
- After cooperating with one team, there are only 9 words left.
- After cooperating with another team, there are only 3 words left.
- After cooperating with a third team, there are only 2 words left.

The two actual passwords, which appear on every list, are “health” and “nerves.”



### Cousins Maze

The one path that leads through the maze is shown below.

1. Pick a person to start with: John.
2. Find the starting person's sister: Sue.
3. Find that person's nephew: David.
4. Find that person's cousin: Terry.
5. Find that person's great-grandfather: George Hyrum.
6. Find that person's great-great-grandson: Jack.
7. Find that person's second cousin: Tyler. A second cousin is someone who shares the same great-grandfather.
8. Find that person's firstborn: Jacoby.
9. Find that person's first cousin twice removed: Jordyn. A first cousin twice removed is someone who is your grandparent's cousin.
10. Find that person's niece: Kindin.
11. Find that person's great-granduncle: George Lloyd. A great-granduncle is someone who is your grandparent's uncle.

Then the three questions can be answered.

- The starting person, John, has the letter “E.”
- The ending person, George Lloyd, has the letter “S.”
- The person not used, Lois, has the letter “T.”

Those letters spell “E St.” They are a reference to the old Parry Roe & Nelson office at 485 E Street. The next clue is on the porch of the office.



## Joke Book

All the cartoons take place in a zoo. The next clue is locked in a duffel bag outside the Tautphaus Park Zoo entrance.

## Child Lock

There are 37 underlines in the letter. The year at the end of the letter is illegible, but Steve's age is clear. Steve was 9 years old in '68. The lock combination is 3768. (The Parry Post calendar showed that Steve was born in 1960, but the correct year is 1959. The lock was originally set to the wrong number when some of the teams visited, so the combination was 3769. It was corrected midway through the puzzle hunt).

## Diced Letter

The 21 square pieces of paper are a cut-up letter. If the letter is reconstructed like a puzzle, and then turned over, the answer can be read. The back of the letter says, "985 Westchester Court," which is where Grandma Lois and Grandpa Jack's family used to live. The next clue is on the porch bench at that address.

## Turn-by-Turn

The first picture was taken on North Yellowstone, facing northeast. You must drive to the north side of town and then follow the highway past the Stinker Station for 13 miles. The second picture is the turnoff for Ririe. Turn left like the arrow shows. The next picture shows the city limits for Ririe, which you will pass on your right. After following the road for 2 miles, you will reach the intersection with the Maverick shown the next picture. Continue straight down East County



## Parry Family Puzzle Hunt

---

Line Road. Almost immediately, on your right you will see the house and the bear statue from the final two pictures. The next clue is resting at the base of the bear statue.





## The Fall

*Our first parents:* The first parents of the human family were Adam and Eve.

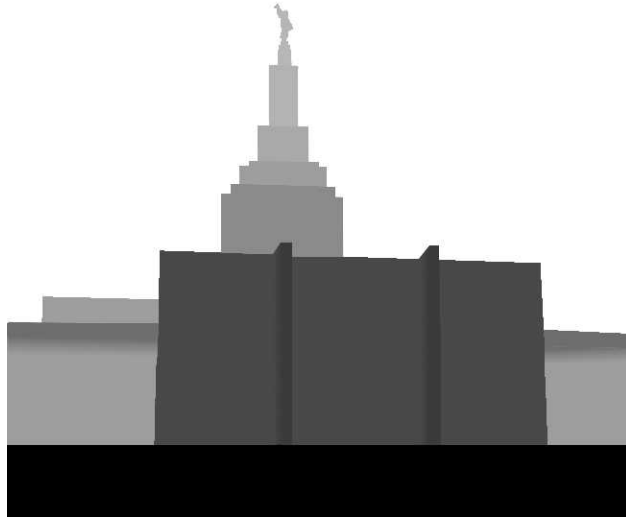
*Spoke with the subtlest of creatures:* Genesis 3:1 says that “the serpent was more subtil than any beast of the field.” Also, the sibilance of repeated “S” sounds in the poem create the effect of a hiss. *Presently cursed with precipitous falls:* The riddle is to find a serpent that is cursed with falls. A serpent is also called a snake. A Snake has Falls if it is the Snake River. The idea of a river is also reinforced by the words “bank” and “splash” later. *Its bank-graced:* There is a Key Bank that is standing near the goal. *Broad wayfaring banks:* The goal is near where the river meets Broadway. *Splash a sportsman:* The location is in Sportsman Park. *Strings there suspend your sought fruit from a span:* The fruit that is sought is the next clue. It is hanging by strings. A span is another name for a bridge, so the clue is hanging from a bridge.

The next clue is hanging under the footbridge in Sportsman Park.



## Magic Eye

Cross your eyes to see the three-dimensional image.



The picture shows the Idaho Falls temple.

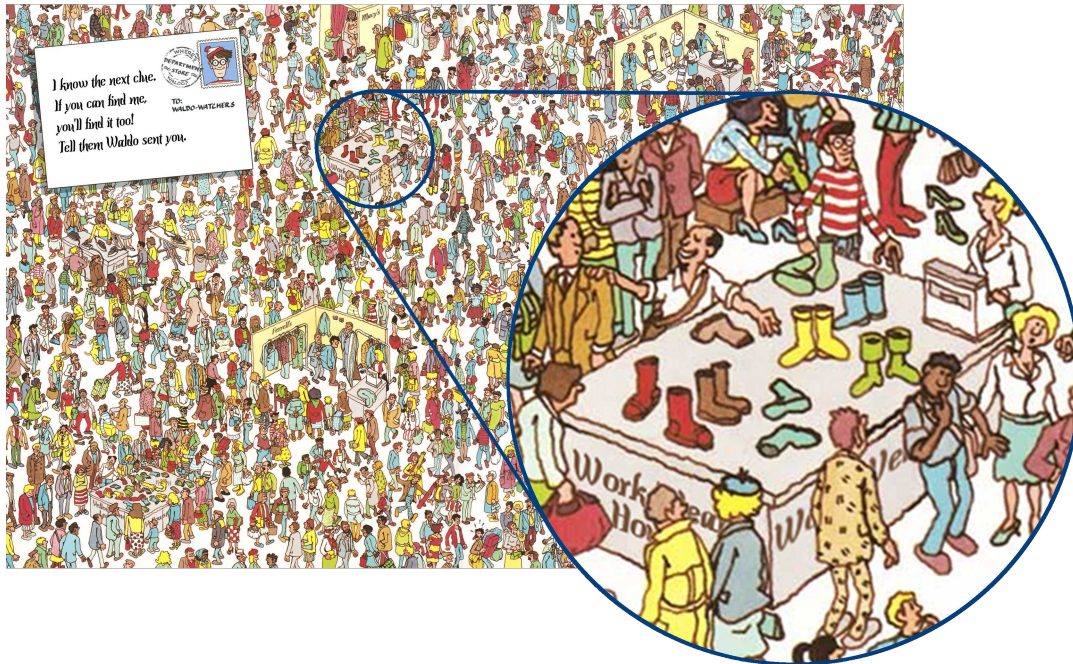


The next location is the temple visitors' center. The clue can be retrieved by speaking with Sister Hillman.



## Where Am I

Waldo can be found near the register for the display of boots.



The name of the shop is partially obscured by shoppers. The part that can be seen says, "Work—ea— Ho—." The full name is "Work Wear House." The next clue is near the register at the Work Wear House.



The tiny font and the picture of the magnifying glass are hints to use one of the novelty magnifying glasses distributed at the start of the puzzle hunt. Each magnifying glass carries the phrase, “Study heritage.” That is a hint to start your search with the one appearance of the word “heritage” in the document.

The message starts at the 28<sup>th</sup> character on the 9<sup>th</sup> line, in the “G” of the word “heritage.” Reading down to the last line, it says, “Go to I, Elisa.” That sentence has bad grammar, but it should seem in place since the clue itself made an identical mistake.

Like a lot of good magic tricks, the Bible Code clue tells a small lie and a big lie. The small lie is that the grid contains the text of the Family Proclamation. In reality, the text has been altered. The big lie is that there is a message to our family hidden in the Family Proclamation. The truth is that there are thousands of random messages that can be found in any document, as long as you know how to look for them.

The alterations to the document were probably subtle enough to appear natural. The spaces and some of the punctuation marks, such as periods, have been removed. That change was necessary to coerce the grid into aligning correctly. Also, each line is exactly 197 characters long. If the line length were different, the message would disappear. The long line length is the reason the font needed to be so small.



## Parry Family Puzzle Hunt

---

In order to find the correct document alignment that would yield the message, a computer program explored all the possibilities. Over 3,000 different combinations of punctuation and spacing were tried, using hundreds of possible line lengths for each one. The computer found more than 100 million messages that contained words in the dictionary and that looked long enough to be worth pursuing. Then the list was filtered down to 200 thousand phrases that contained words relevant to either Idaho Falls or the family. Most of those were a nonsense jumble that would not make a good message. Chad and Elisa scanned through them and flagged any that seemed to be candidates. Other available messages that could have been used were, "Hid in beds," "We go to Taft," "Read it on tin," "Renee go boat," "Hint tied a coin," "I read at Aetna," and "I let Ted drive." (None of these messages appear in the existing grid, because they all require a different line length and different combination of punctuation. For example, the "Renee go boat" message only appears if the lines are exactly 240 characters long, spaces are removed, all punctuation is retained, and you read up instead of down.)



## Parry Family Puzzle Hunt

### Clan Roster

The roster lists the names of the Fuller family members. Each Fuller child appears in birth order with their entire nuclear family. Within each nuclear family, the husband and then the wife and then the children are listed.

M A R K  
J A C K I E  
L E O N A R D  
B R O O K E  
K A Y D R A  
K A N Y O N  
M I R A N D A  
D A N  
C O U R T N E Y  
K A L L I  
T A R E K  
D R E Y K E N  
P A U L  
J A K E  
J A N A  
R I L E Y  
S C O T T  
T R A C I  
E N O C H  
A N D R E  
M A R K E L L  
J A C K S O N

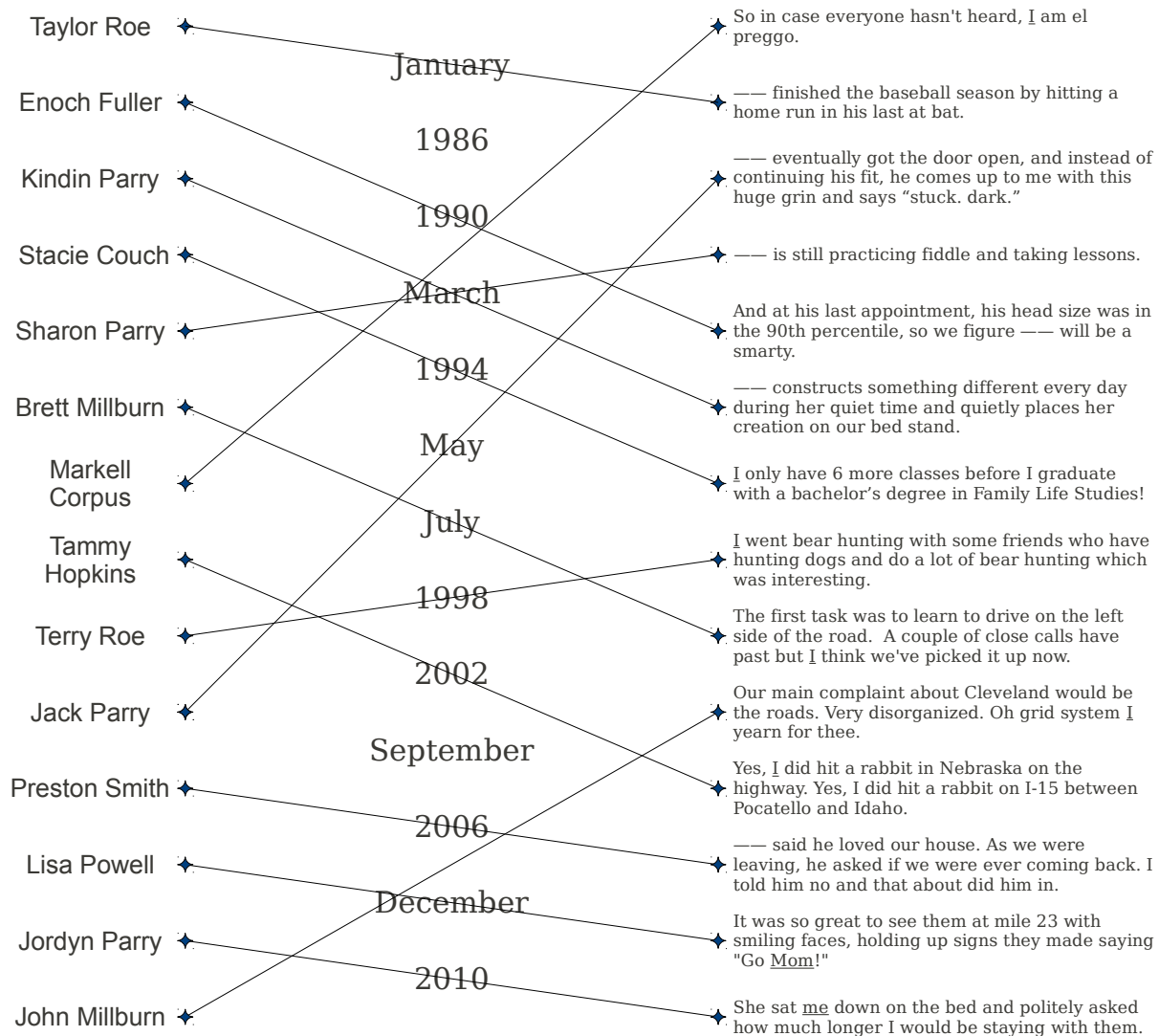
The letters in the trapezoids, squares and circles, respectively, spell “Emerson monkey bars.” The next clue is hidden under the monkey bars at Emerson school.



## Parry Family Puzzle Hunt

### Current Events

After drawing a straight line to connect each person with their quote, the clue looks like this:



All the times are struck out except for September 1986. The team needs to locate the old Parry Post issue, Volume 1, Number 3, from September 26, 1986.





## Parry Family Puzzle Hunt

### Peephole

According to the "Current Events" clue, the team should locate the old Parry Post issue, Volume 1, Number 3. The team needs to use the pages from the Parry Post issue and Peephole Part I and Peephole Part II at the same time.

First, take the sheet labeled "Peephole Part I." Behind that, place the Peephole Part II page, but turn it so that facing up is the message, "These holes belong behind 'Peephole Part I.'" Then at the bottom place page 1 of the Parry Post issue. Line up the three sheets exactly. The holes in the clue will line up with each other and with the Parry Post. The only word showing through will be "shelter." That is the second word of the final destination.



Next, take the sheet labeled "Peephole Part II." Behind that, place the Peephole Part I page, but turn it so that facing up is the message, "These holes belong behind 'Peephole Part II.'" Then at the bottom place page 2 of the Parry Post





## Parry Family Puzzle Hunt

---

issue. This time, there will be three windows, which say, “letters” and “re-” and “arranged.” That indicates that the letters in the passwords must be rearranged.

The two passwords are “health” and “nerves.” So the letters that are available are:

H E A L T H   N E R V E S

The Part I solution shows that the final destination has two words and that the second word is “shelter.” The word “shelter” can be created from the above letters if they are unscrambled like this:

H E A N V   S H E L T E R

Next the letters on the left need to be rearranged into a word. There is only one legitimate word that is spelled with those letters:

H A V E N   S H E L T E R

The final destination is Haven Shelter, which is located on the South Yellowstone Highway near Sunnyside. The teams should go to the Haven Shelter office. The final task of the puzzle hunt is to donate the pair of boots to the Haven Shelter staff.